

CARBON
FOOTPRINT
REPORT

2022

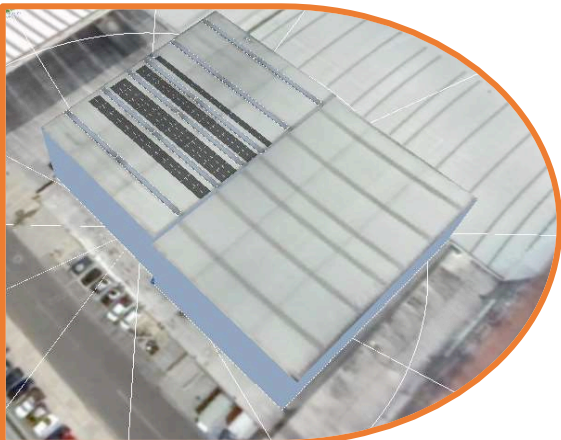


Report Results

Carbon Footprint



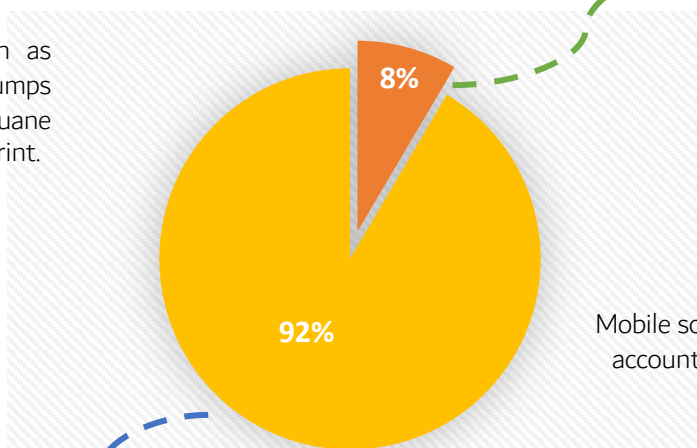
According to the results of Kluane Colombia's Carbon Footprint measurement conducted by Corporación Ambiental Empresarial, during the year 2022 Kluane's total GHG emissions result was of 2226,30 t CO₂e.



On the Road to Carbon Neutrality

The estimation of the Corporate Carbon Footprint will allow Kluane Colombia to have a starting point to establish action plans in order to optimize the use of resources, find efficiencies, strengthen information management, implement new technologies, and set goals to reduce or offset the Carbon Footprint. One of the main strategies to reduce our carbon footprint is the implementation of solar energy systems.

Stationary sources such as engines and pumps represent 92% of Kluane Colombia's carbon footprint.



Mobile sources such as vehicles account for 8% of the carbon footprint.

As can be seen, the greatest contribution to the carbon footprint is related to direct emissions, in which those generated by fixed sources stand out, which correspond to the use of oils, lubricating greases and diesel or ACPM, motor gasoline, welding cylinders such as acetylene and Co₂ and CO₂ extinguishers, representing 91.31% of the company's total emissions.

Mitigation Measures



Eje	Líneas de acción	Medidas	Seguimiento
Mitigation and Compensation	Greenhouse Gas Inventory (GHG)	Prepare an annual inventory of emissions.	Annual
	GHG reduction	<p>Optimization of transportation processes.</p> <p>Keeping track of oil, grease, welding cylinders and ACPM consumption.</p> <p>Change to LED lighting in the required areas.</p> <p>It is recommended to encourage the saving and efficient consumption of paper in the administrative and operational areas.</p> <p>Carry out good energy saving practices on computers.</p>	Annual
	Implementation of renewable energies	Implement own generation sources for use during peak consumption hours of the production process and manage the availability of electricity service at efficient costs.	Annual
	Offsetting GHG emissions	Compensation for nature preservation on a voluntary or certified basis.	Annual

